

NONPROFIT ORG
US POSTAGE PAID
FALMOUTH, KY
PERMIT # 69

The Grazing Gazette

An Agricultural Newsletter 2024 VOL. II

Hello Agrarians,

Ah, spring! A season of renewal, awakening, and boundless possibilities. As the fields transform into vibrant carpets of green, the melodious chirping of birds fills the air, and delicate flowers bloom, it's a joyous time to be immersed in the beauty of nature. And let's not forget the newest additions to our farms – the adorable calves that bring an extra dose of excitement to the season!

As you dive into the busyness of sunshine-filled days, we're here to accompany you every step of the way. From navigating challenges with pesky insects and crop diseases to providing valuable insights for a successful growing season, consider us your trusted companions in your farming journey.

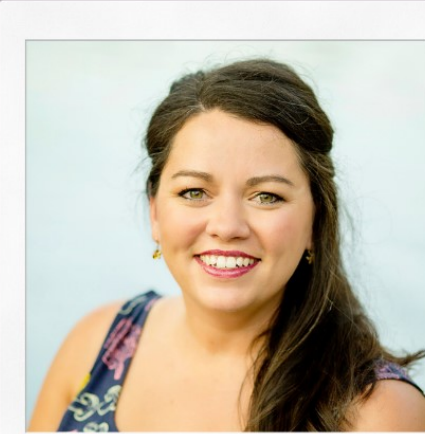
As we wind down our heavy educational season, we're gearing up to shift our focus towards consumer education and natural resource management for the summer months. But fear not! While our classes may wind down, our commitment to serving you remains unwavering. So don't hesitate to reach out – I'll be right here, ready to lend a helping hand whenever you need it.

And here's an exciting update – registering for our programs is now easier than ever! Simply hop online and breeze through the registration process with just a few clicks. Plus, stay in the know about our upcoming events and educational opportunities by visiting our regularly updated website. It's your one-stop-shop for all things farming-related!

So as you embark on this journey of growth, learning, and abundance, remember that we're here to support you every step of the way. Here's to a season filled with prosperity, joy, and countless farming adventures!

Now happy farming folks, and I hope to see ya soon!

Lindie Huffman



Lindie Huffman
Agriculture & Natural Resource
Pendleton County Extension Agent

IN THIS ISSUE:

| | |
|--------------------------------------|---|
| Interest Rates & Beef Herd Expansion | 2 |
| The Agent's Corner | 3 |
| Grow Smart with SOW | 4 |
| KY Tick Surveillance Program | 6 |
| Upcoming Ag Events | 7 |

Find us on



Pendleton County Cooperative Extension
Agriculture & Natural Resources



Cooperative Extension Service
Agriculture and Natural Resources
Family and Consumer Sciences
4-H Youth Development
Community and Economic Development

Educational programs of Kentucky Cooperative Extension serve all people regardless of race, color, age, sex, religion, disability, or national origin. University of Kentucky, Kentucky State University, U.S. Department of Agriculture, and Kentucky Counties, Cooperating.
LEXINGTON, KY 40546



PENDLETON COUNTY EXTENSION TRIP ORGANIZER

Agricultural & Cultural Heritage Tour

Explore New England September 1-8, 2024

PRICE \$2,200 /Person

Package Includes

- ✓ Charter Bus Transportation
- ✓ Tour Guide(s)
- ✓ Accommodation
- ✓ Some Meals

Travel to New England on a whirlwind 10-state adventure to explore agriculture, cultural heritage, and the natural wonders of the United States! Bond with others as you go from tourist to traveler with the staff of the PCEO! Price is based on double occupancy. Register today!

Contact Us 859.654.3395 pendleton.ca.uky.edu @PendletonCountyExtensionOffice

INTEREST RATES COULD BE CONTRIBUTING TO INTEREST IN BEEF HERD EXPANSION

Kenny Burdine, Extension livestock economist at University of Kentucky



USDA's cattle inventory report confirmed that the US cowherd continued to get smaller during 2023. Higher input costs, regional weather challenges and hay supply issues, strong cull cow prices and several other factors have contributed to a prolonged liquidation phase of this cattle cycle. Despite the fact that calf prices were relatively strong during 2023, there is no indication that heifer retention has begun. It would appear that we are likely to see a "slow expansion" when beef cow numbers do start to grow in the coming years. At some point, the cattle market will be strong enough, and weather will be cooperative enough, that we will reverse this trend of decreasing cow numbers.

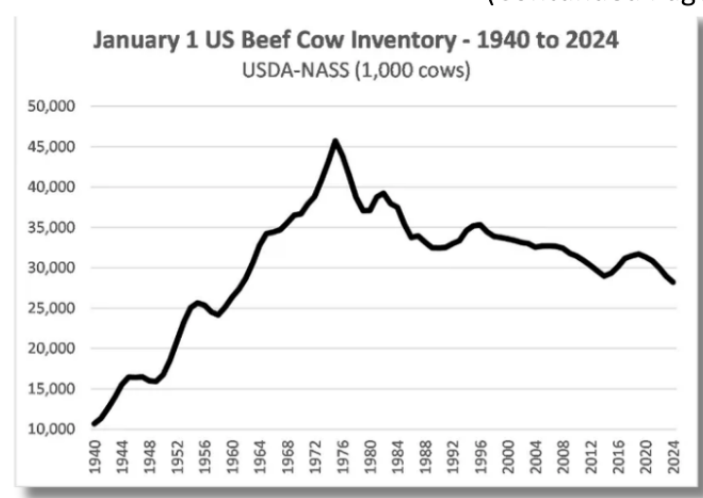
Occasionally someone will ask why we tend to expand the cowherd when prices are high. It would seem that the best time to expand would be when prices are low because females are worth less. It's a good question and I understand why someone would ask it. On the surface it is true that the cost of breeding stock tends to be lower when calf prices are lower and the full cost of developing a heifer is lower when heifer calves are less valuable. But producers tend to expand during high priced times for

two reasons. First, the high calf prices make them more interested in having a larger number of calves to sell in the future. And secondly, high price times often provide the ability to sell fewer calves and still meet financial obligations. By that I mean it is easier to sell fewer heifer calves when the steers and heifers you do sell are fetching a higher price.

I wanted to walk through this to set up the idea that the current interest rate environment is another factor making expansion less attractive to cow-calf producers. The expansion decision is really a tradeoff. A cow-calf producer choosing to expand makes a short-term investment (heifer retention or breeding stock purchase) in hopes of seeing higher profit levels in the future. Any time a short-term / long-term discussion is had, interest rates and inflation are likely to enter the conversation.

The first impact of high interest rates on expansion is the most obvious – the cost of financing breeding stock increases. A farmer wishing to purchase bred heifers in order to expand the number of cows he / she runs will pay more in interest over the length of that loan.

(Continued Page 6)



UPCOMING AG EVENTS



PCEO CLASS REGISTRATION

Please ensure to check each event for registration details. Kindly register at least 2 days prior to the event.

CAIP EDUCATIONAL FORM INSTRUCTIONS: Complete the orange educational form. Lintie County Agent will sign at in-person programs. Attending a virtual program? Complete the form, then drop it off at the PCEO for agent approval.

| DATE | MEETING/EVENT | CAIP APPROVED |
|----------------------|--|---------------|
| APR 17 6:30 PM | BUSINESS OF FARMING SESSION 5 PENDLETON CES 45 David Pribble Dr Falmouth What programs pay me to farm? We'd like to know, too... Join us as Eli Mann of Farm Credit Mid-America discusses tactics for preparing for the ag lender. Lintie County Agent will discuss other opportunities for farm financial offsets and funding opportunities beyond CAIP. | YES |
| MAY 4 9 AM - 1 PM | PENDLETON CO. FARMERS' MARKET OPEN FOR SEASON PC FAIRGROUNDS 20 FAIRGROUNDS ROAD Get your hats ready and join the excitement as your favorite farmers return for the season opener and Derby Day at PCFM! Dive into the vibrant atmosphere of our local market, where every vendor crafts or cultivates their offerings with love. With no wholesale in sight, it's all about celebrating the unique flavors and talents of our community. Let's kick off the season in style! | NO |
| MAY 4 9 AM - 2 PM | CAMPBELL COUNTY FARM & LIVESTOCK EXPO ALEXANDRIA FAIRGROUNDS CCEO 859.572.2600 Come on on out for a day of education, health screenings, and fun for the entire family. There will be sheep & goat demonstrations, UK Ag Engineering specialists will be conducting a Drone Demonstration, and the UK Ag Nurse, will be on hand for free health screenings. There will even be a live auction at 10:00 AM!!! | YES |
| MAY 22 TBD | FORAGE FOCUS: WEED CONTROL IN PASTURES & HAY LOCATION TBD CCEO 859.572.2600 Discover essential techniques for weed control in pastures & hay fields in Forage Focus. Learn to identify common weeds & implement practical methods for healthier forage stands. Perfect for all farmers aiming to boost productivity. | YES |
| JUN 3 TBD | EQUINE ESSENTIALS: THE LEGAL SIDE OF EQUINE LOCATION TBD CCEO 859.572.2600 Explore the legal side of equine businesses in Equine Essentials. Ideal for horse owners and enthusiasts seeking clarity on legal matters related to their equine ventures. | YES |
| JUN 20 TBD | FORAGE FOCUS: SMALL RUMINANT FIELD DAY LOCATION TBD CCEO 859.572.2600 Discover the keys to success in intensive grazing with sheep and goats at our Small Ruminant Field Day! Learn effective strategies and best practices for maximizing productivity and sustainability in your operation. Whether you're a | YES |

Classes with no registrations will be canceled without notice

(Continued from page 2...)
 higher interest expense lowers the potential profitability on that bred heifer as she starts to produce calves in the future. A producer that expands through heifer retention is still impacted as that producer sells fewer heifers in the short run and incurs development costs on those heifers retained. Even if money is not borrowed directly for this purpose, the opportunity cost of the money not received by selling the heifer calves and the money spent on development is more significant in a higher interest rate environment.
 The second impact is one that is not discussed as often, but I also feel that is very relevant – interest rates impact the time value of money. Money in the present is always preferred over money in the future and interest rates largely determine how significant that preference is. When a producer retains a heifer for replacement purposes, he / she forgoes her value as a calf (present) in order to see increased revenues from the sale of her calves after she enters the herd (future). The preference for money now, from the sale of the weaned heifer, is greater when interest rates are higher. At the same time, the real value of those future calves is lower due to higher interest rates. An economist might say those future returns are “more heavily discounted” in a higher interest rate environment. This combination results in less desire to hold heifers for development purposes and I think we are seeing some impact from this today.

I think weather (forage supply), calf prices, and production costs are the three main determinants of expansion. But we also can't ignore the fact that we are in a very different interest rate environment in 2024 than we were during our last expansion phase. Interest rates have been another factor delaying expansion of the cowherd and should be watched as we consider when we will turn the corner on this cattle cycle.

THE AGENT'S CORNER

Cost-Share Update



Approved 2023-2024 CAIP Producers:
CAIP Paperwork & Project Deadline:
June 28, 2024 by 3:00 PM

Questions about the program?
 PC Ag Agent: Lindie Huffman - 859.813.2944
 PC CAIP Admin: Martha Gosney - 859.743.8733

What is CAIP?
 The County Agriculture Investment Program is a Cost-share program for farmers to receive funding for farm production expansion and improvements.
The next application window is expected in Oct/Nov 2024.

Plate it up! RECIPE of the SEASON

Roasted Beet and Orange Salad

- 3 medium fresh beets (about 1 pound)
- 4 medium navel oranges, peeled and sectioned
- 4 ounces crumbled feta cheese
- 1/2 cup chopped walnuts (optional)
- 1/4 cup minced fresh mint

Orange Vinaigrette:

- 2 tablespoons olive oil
- 1 teaspoon grated orange zest
- 2 tablespoons orange juice
- 1/2 teaspoon apple cider vinegar
- 1 teaspoon honey
- 1 teaspoon Dijon mustard
- 1/2 teaspoon salt
- 1/4 teaspoon pepper

Preheat oven to 425 degrees F. **Wash** hands with warm soap and water, **scrubbing** for at least 20 seconds. **Scrub** beets and **trim** tops to 1 inch. **Wrap** in foil, **place** on a baking sheet. **Bake** 50 to 60 minutes or until tender. **Remove** foil; **cool** completely. **Peel** beets and **chop** into bite-sized pieces. In a small bowl, **whisk** oil, orange zest, orange juice, vinegar, honey, mustard, salt, and pepper until blended. In a large bowl, **combine** cooked beets and orange sections. **Add** the vinaigrette and **toss** gently to coat. **Spoon** mixture on serving plate and **top** with feta cheese, walnuts, and fresh mint.

Yield: 4 servings. **Serving size:** 1/4 of recipe.
Nutrition Analysis: 130 calories, 23g total fat, 6g saturated fat, 23mg cholesterol, 310mg sodium, 27g total carbohydrate, 5g fiber, 18g total sugars, 1g added sugars, 8g protein, 0% DV vitamin D, 15% DV calcium, 6% DV iron, 10% DV potassium.

Shop for local ingredients with local farmers.

KY Tick Surveillance Program

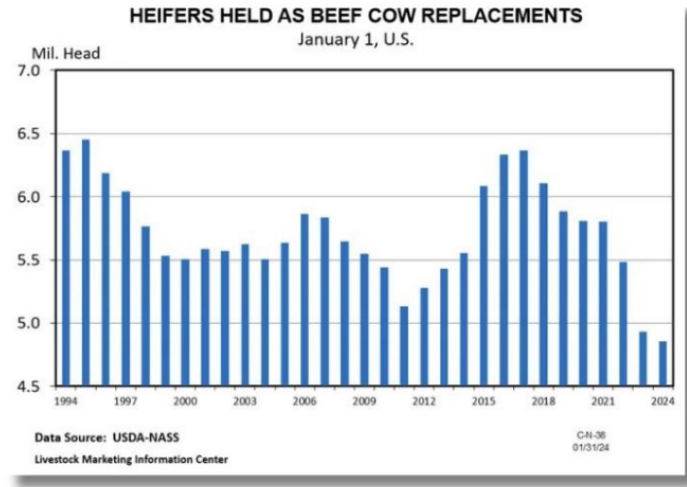
"The Kentucky Tick Surveillance Project directly contributes to our understanding of tickborne diseases and their distribution across the state," said Jonathan Larson, UK Department of Entomology assistant professor. "By the community participating, Kentuckians are not only aiding in crucial public health research but are also taking proactive steps toward safeguarding their own health and their neighbor's."



Follow STRICT Guidelines

- Must Submit Digital Form
- Do Not Mail Live Ticks:
- Avoid Liquid Alcohol:
- Proper Packaging:
- Avoid Taping Ticks:

For form & address, scan the QR code



Left: RSVP volunteers helped distribute over \$30,000 of gardening supplies that were donated to the PCEO at the Garden Extravaganza Giveaway. Center: The PENco Hikers atop of Turkey Spur in New River Gorge National Park in West Virginia. Right: Sharing the Sprouts Kids Club Program with Jr. Volunteer Lilyana at the KY Volunteer Forum.

Everyday I'm BRUSSELIN!
 #Extensionbehindthescenes, what has #indiecountyagent been up to...

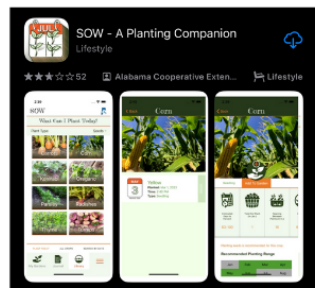


GROW SMART WITH SOW: KENTUCKY GARDENERS' ULTIMATE APP FOR PLANTING SUCCESS

Rick Durham, UK horticulture extension specialist

Kentucky gardeners can download a free tool in the Apple and Google Play app stores to help them decide what to plant and harvest in their home garden. The app SOW—A Planting Companion is largely based on ID-128 Home Vegetable Gardening in Kentucky from the University of Kentucky Cooperative Extension. The app also has information from the Cooperative Extension services in Alabama and North Carolina for users in those states. The app provides growing information for Plant Hardiness Zones 6a–9a. Some parts of Kentucky are in zones 6a or 7a, but most of the state is in zone 6b. When you get the app, enter your state and county for plant information specific to your hardiness zone. You can always go back to the settings menu and change the information if you are interested in looking at data specific for other hardiness zones.

The app has three main parts: Library, My Garden and Journal.



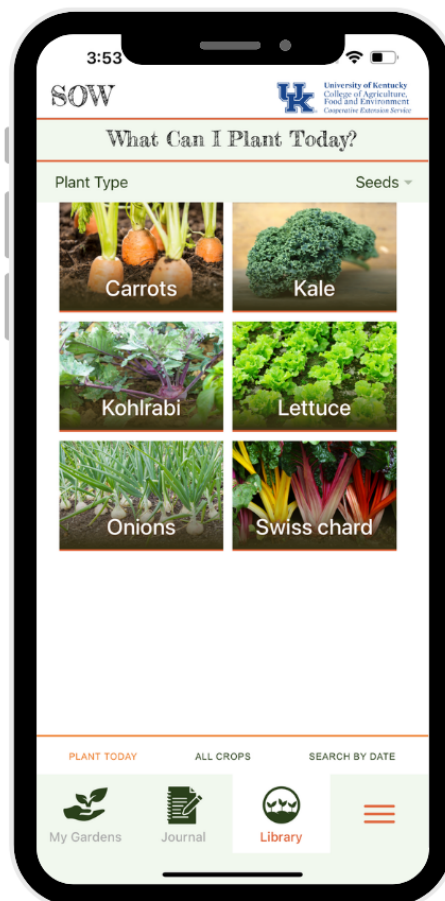
- The library has informational sheets and pictures of almost 40 common home garden vegetables. You can arrange the vegetables by planting date, vegetable name or harvest date.
- When you click on a vegetable in the library, more information about that vegetable will appear. This information includes how many plants you need to grow for a good harvest, how far apart you should plant them, how deep you should plant them, and the range of pH levels in the soil.
- There are also specific cultivars of each crop recommended for Kentucky gardens.

My Garden:

- You can also add plants to the My Garden area. You can design more than one garden at the same time. For example, you could have a spring garden, a summer garden and a fall garden. My Garden helps you remember when you planted, whether you used seeds or transplants, what cultivar or variety you planted and when you should be able to harvest it.
- You can also plan and enter a date to plant in the future. This is beneficial when you are planning transitions from the spring to summer garden, or from summer to fall. The app will then let you add that scheduled planting date to your phone's calendar as a reminder.

Journal:

- Once a crop is harvested, use the Journal section to write down the yield, the harvest date and any other information that might help you plan your garden for next year.
- The app can also link you to your local Cooperative Extension office, where you'll find staff information and ways to contact extension agents with questions.



**Farmers' Market
Opens May 4th**

Your favorite farmers, artisans, and bakers are back, and then some!

Shop Local for great farm fresh products.

Shared-Use Equipment

Share the Load, Multiply the Yield:
Join Our Shared-Use Program Today!

Training:

NEW! **Annual Training Requirement:** To ensure safe and effective use of the equipment, all renters must attend an annual training class held at the Pendleton County Extension Office. This training covers proper operation, maintenance, and safety protocols.

Rental:

- No Reservations: Equipment is available on a first-come, first-served basis, eliminating the hassle of booking in advance.
- Rental Rates:
 - PCBCA Members: \$100 per day
 - Non-Members: \$125 per day
- Deposit Requirement: A refundable deposit of \$200 is required to rent equipment. This ensures accountability and covers potential damages.

Equipment Available for Rental:
No-till Seed Drill (2)
6 Ton Lime Spreader (3)
4 Ton Lime Spreader (1)

Call the PCEO to check availability 859.654.3395 | Check or Exact Change ONLY | Checks payable: PCBCA | Rental Period is 24 Hour | Must Sign Rental Agreement

PENCO HIKERS

"A journey is best measured in friends rather than miles."

JOIN THE ADVENTURE.
SAVE THE DATES.

- ✓ May 17 - Carter Caves State Park
- ✓ July 26 - The Pinnacles, Berea
- ✓ September 28 - Mammoth Cave
- ✓ March 20-22, 2025 - Southern Indiana (Leave 4 pm on 20th, PC Schools is out the 21st)

MORE INFORMATION Released Closer to Departure

pendleton.ca.uky.edu

"Explore nature with PENCO Hikers! Join our club for thrilling outdoor adventures, fostering camaraderie and fitness. Whether you're a seasoned trekker or new to hiking, come discover the joy of exploration with us!"



UK Martin-Gatton
College of Agriculture,
Food and Environment